



DECORATIVE

**PERMATONES™/PERMABRITES™**  
GLAZED CERAMIC MOSAIC

 **daltile®**  
IMAGINE WHAT'S POSSIBLE™



Above and cover photos feature Permabrites™ Almond and Urban Putty 2 x 2 and Semi-Gloss™ Spa 6 x 6 on the wall.

## Enrich Your Space with Classic Color

### USAGE

Floors      Walls      Countertops

F ‡      W      C ‡

‡ Permatones only

Suitable for exterior applications in non-freezing climates, when proper installation methods are followed.

Please see reverse side for specific recommended applications.

Enhance your design with the classic colors of Permatones™ and Permabrites™. These durable mosaics are fade- and stain-resistant. For added design options, both series coordinate with the popular Keystones™ collection. Whether you use these two series together or alone, Permatones and Permabrites enrich your space with long-lasting color.

- **REFINED VISUAL**
  - Richly-colored mosaics
  - Offered in two popular finishes – matte (Permatones) and high-gloss (Permabrites)
- **COLLABORATIVE OPTIONS**
  - Coordinates with the Daltile Keystones™ collection
  - Available with coordinating trim



### PRE-CONSUMER RECYCLED MATERIALS

All or select items within this series meet the requirements for these qualifications. For more information visit [daltile.com](http://daltile.com).

# PERMATONES™/PERMABRITES™

GLAZED CERAMIC MOSAIC

## PERMATONES - MATTE TILE



DESERT GRAY 6564 (1)



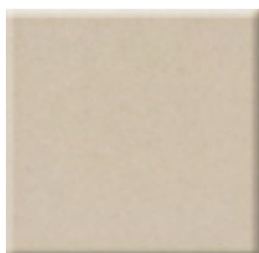
ARCTIC WHITE 6570 (1)



ALMOND 6565 (1)



SUEDE GRAY 6553 (1)



URBAN PUTTY 6561 (1)



GALAXY 6538 (2)



BLACK 6521 (1)

## PERMABRITES - GLOSSY WALL TILE



DESERT GRAY 6464 (1)



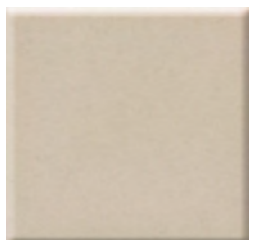
ARCTIC WHITE 6470 (1)



ALMOND 6465 (1)



SUEDE GRAY 6453 (1)



URBAN PUTTY 6461 (1)



GALAXY 6438 (2)




BLACK 6421 (1)

# PERMATONES™/PERMABRITES™

GLAZED CERAMIC MOSAIC

## SIZES

	Thickness	Sq. Ft./ Carton	Pieces/ Carton
 2 x 2 Mosaic (12" x 24" Sheet) (Dot-mounted) (30.48 cm x 60.96 cm Sheet)	1/4"	24.00	12

## APPLICATIONS

	Target DCOF wet	Suitable
Dry & Level – Interior Floor	N/A	✓ <sup>‡</sup>
Wet & Level – Interior Floor	≥ 0.42	
Shower Floors (Residential or Light Commercial)	≥ 0.42	
Exterior Floor Applications (including pool decking & other wet areas with minimal footwear)	≥ 0.60	
Ramps & Inclines	≥ 0.65	
Walls/Backsplashes	N/A	✓
Countertops	N/A	✓ <sup>**</sup>
Pool Linings	N/A	✓

A DCOF value of ≥ 0.42 is the standard for tiles specified for level interior spaces expected to be walked upon when wet, as stated in ANSI A137.1-2012, Section 9.6. For more information about DCOF and the DCOF AcuTest™, visit [daltile.com/DCOF](http://daltile.com/DCOF).


### APPLICATION NOTES :

Suitable for exterior applications in non-freezing climates, when proper installation methods are followed.

‡ Permatones only

\* Darker colors may show scratches.

## INSTALLATION

Grout Joint Recommendation	Shade Variation
1/8" Approximately	 Low (V1)

## PERFORMANCE CHARACTERISTICS

	ASTM#	Permatones Result	Permabrites Result
Water Absorption	C373	< 3.0%	< 3.0%
Breaking Strength	C648	> 300 lbs	> 300 lbs
Scratch Hardness	MOHS	6.0-7.5	4.0-6.0
Chemical Resistance	C650	Resistant	Resistant
Abrasion Resistance	C1027	4	N/A

For additional information on test results, visit us at: [daltile.com/information/TestResults](http://daltile.com/information/TestResults).

## NOTES

Since there are variations in all fired ceramic and natural products, tile and trim supplied for your particular installation may not match samples. Final confirmation should be made from actual tiles and trim prior to installation. Manufactured in accordance with ANSI A137.1 standards.

Not for use on ramps. Water, oil, grease, improper drainage and certain footwear can create slippery conditions. Floor applications expected to be exposed to these conditions require extra caution in product selection.

For additional information refer to "Factors to Consider" at: [daltile.com/Factors](http://daltile.com/Factors).

Manufacturer Advisory: All tile is measured by the DCOF AcuTest™ method. Tiles with DCOF values <0.42 are not recommended for use in areas with wet or slippery conditions. For more information, see ANSI standard A137.1 section 6.2.2.1.10, available at [www.tileusa.com](http://www.tileusa.com).



DESIGNED TO HELP EARN LEED™ CREDITS. For more detailed information, visit [daltilegreenworks.com](http://daltilegreenworks.com).

7834 C.F. Hawn Freeway,  
Dallas, Texas 75217 | 1.800.933.TILE

To view the complete collection of Daltile® products and information, visit our website at [daltile.com](http://daltile.com).



IMAGINE WHAT'S POSSIBLE™

©2018 Daltile (3/18)