



LINEAR OPTIONS™
LINEAR CUTTING SERVICE



daltilo®

With Linear Options™ you can think outside of the box. Daltile now has the capability to cut floor tile into linear and rectangular sizes for unique custom designs.

With this service, any of our floor tiles may be cut with straight or beveled edges. Linear Options™ offers a wide variety of rectangular shapes, which can range from a minimum of 2" wide to a maximum of 24" long.

Please visit www.daltileproducts.com/lineartoptions.

CORE PRODUCTS AND SIZES

CITYVIEW™ – 6" x 24" / 4" x 24" / 2" x 24"



Harbour Mist CY01



District Gold CY03



Skyline Gray CY02



Downtown Nite CY04



Seaside Boardwalk CY06



Neighborhood Park CY05



Village Café CY07



Urban Evening CY08

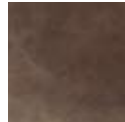
CONCRETE CONNECTION™ – 3-1/4" x 20"



Boulevard Beige CN90



Plaza Rouge CN93



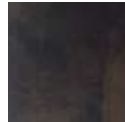
Eastside Brown CN94



Steel Structure CN91

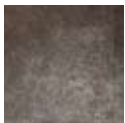


City Elm CN92

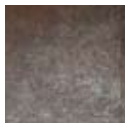


Downtown Black CN95

METAL EFFECTS™ – 3-1/4" x 20"



Brilliant Bronze ME02



Shimmering Copper ME01



Illuminated Titanium ME03



Radiant Iron ME04

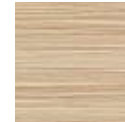
FABRIQUE™ – 6" x 24" / 4" x 24" / 2" x 24"



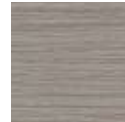
Blanc Linen P685



Creme Linen P686



Soleil Linen P687



Gris Linen P690



Bleu Linen P688



Noir Linen P689

MONTICITO™ – 6" x 18"



Créma MI20



Alba MI21



Brune MI22





Photo features Vibe™ in Techno Brown 6" x 24" on the floor and Techno Beige 6" x 24" on back wall. Front, curved wall features Techno Brown, Techno Beige and Techno Green 2" x 24".

VERANDA™ – 3-1/4" x 20"



VIBE™ (Light Polished and Unpolished) – 6" x 24" / 4" x 24" / 2" x 24"



CORE PRODUCT ORDERING

Core product offering is made to order, with a three week lead time.

SPECIAL ORDERS

Special Order items (sizes and floor products outside of the core offering) are also available. Pricing and lead time will be determined on an order-by-order basis. See your Daltile representative for more information.

Sizes

	Nominal (Standard)	Sq. Ft. Per Carton	Pieces Per Carton
CityView™ 2" x 24"	(Nominal 2" x 23-1/2") (Nominal 4.67 cm x 59.5 cm)	6.66	20
CityView™ 4" x 24"	(Nominal 4" x 23-1/2") (Nominal 9.73 cm x 59.5 cm)	6.46	10
CityView™ 6" x 24"	(Nominal 6" x 23-1/2") (Nominal 14.63 cm x 59.5 cm)	10.65	11
Concrete Connection™ 3-1/4" x 20"	(Nominal 3-1/4" x 19-1/2") (Nominal 7.96 cm x 49.6 cm)	4.16	10
Fabrique™ 2" x 24"	(Nominal 2" x 24") (Nominal 4.67 cm x 60.0 cm)	6.66	20
Fabrique™ 4" x 24"	(Nominal 4" x 24") (Nominal 9.73 cm x 60.0 cm)	6.46	10
Fabrique™ 6" x 24"	(Nominal 6" x 24") (Nominal 14.63 cm x 60.0 cm)	10.65	11
Metal Effects™ 3-1/4" x 20"	(Nominal 3-1/4" x 19-1/2") (Nominal 7.96 cm x 49.6 cm)	4.16	10
Monticito™ 6" x 18"	(Nominal 6" x 17-5/8") (Nominal 14.66 cm x 44.8 cm)	9.0	12
Veranda™ 3-1/4" x 20"	(Nominal 3-1/4" x 19-1/2") (Nominal 7.96 cm x 49.2 cm)	4.16	10
Vibe™ 2" x 24"	(Nominal 2" x 23-1/2") (Nominal 4.67 cm x 59.8 cm)	6.66	20
Vibe™ 4" x 24"	(Nominal 4" x 23-1/2") (Nominal 9.73 cm x 59.8 cm)	6.46	10
Vibe™ 6" x 24"	(Nominal 6" x 23-1/2") (Nominal 14.63 cm x 59.8 cm)	10.65	11

Applications

	Residential	Light Commercial	Commercial	Commercial Exteriors
Floors	❖	❖	❖▲	
Walls/Backsplashes	❖	❖	❖	❖
Countertops	❖	❖	❖	❖
Pool Decking				
Pool Lining	❖	❖	❖	❖

▲ Excludes Metal Effects and Vibe (Light Polished)

Installation

Thickness	Grout Joint Recommendation
3/8" (5/16" Monticito only)	1/8" (3/16" when used in a staggered brick-joint pattern, where the overlap does not exceed 33%)

Shade Variation

- High (V3) - CityView™, Concrete Connection™, Metal Effects™, Monticito™, Veranda™
- Medium (V2) - Fabrique™, Vibe™

Performance Characteristics



	Coefficient of Friction	Water Absorption	Breaking Strength	Scratch Hardness	Chemical Resistance	Abrasion Resistance
CityView™	Wet: ≥0.60 Dry: ≥0.70	<0.5%	>500 lbs	8.0	Resistant	N/A
Concrete Connection™	Wet: ≥0.60 Dry: ≥0.70	<0.5%	≥400 lbs	8.0	Resistant	3
Fabrique™	(Unpolished) Wet: ≥0.60 Dry: ≥0.70	<0.5%	>450 lbs	8.0	Resistant	N/A
Metal Effects™	Wet: ≥0.60 Dry: ≥0.70	<0.5%	≥370 lbs	8.0	Resistant	3
Monticito™	Wet: ≥0.60 Dry: ≤0.66	<0.5%	>450 lbs	7.0	Resistant	N/A
Veranda™	Wet: ≥0.60 Dry: ≥0.80	<0.5%	>500 lbs	8.5	Resistant	N/A
Vibe™	(Unpolished) Wet: ≥0.60 Dry: ≥0.70 (Lt. Polished) Wet: ≥0.50 Dry: ≥0.60	<0.5%	>450 lbs	8.0 (6.0 for V155)	Resistant	N/A

For additional information refer to "Factors to Consider" at www.daltile.com/CommercialFactors.

Water, oil, grease etc. create slippery conditions. Floor applications with exposure to these conditions require extra caution in product selection. Not for use on ramps.

Notes

Special care should be taken when grouting with dark pigmented colors. A grout release is recommended to prevent finely powdered pigments from lodging in the pores of the surface. Use of a latex modified thin-set is recommended for installation.

Special care needs to be given when installing tiles 20" and larger. Please refer to www.daltileproducts.com/LargeTiles for information.

Since there are variations in all fired ceramic products, the tile and trim supplied for your particular installation may not match these samples. Final color selection should be made from actual tiles and trim and not from tile and trim samples or color reproductions.

Manufactured in accordance with ANSI A137.1 standards.

Metal Effects: Due to the metallic granules used in the surface of the tile, it is extremely important to ensure that the tile does not come in contact with any abrasive agents or chemicals.

